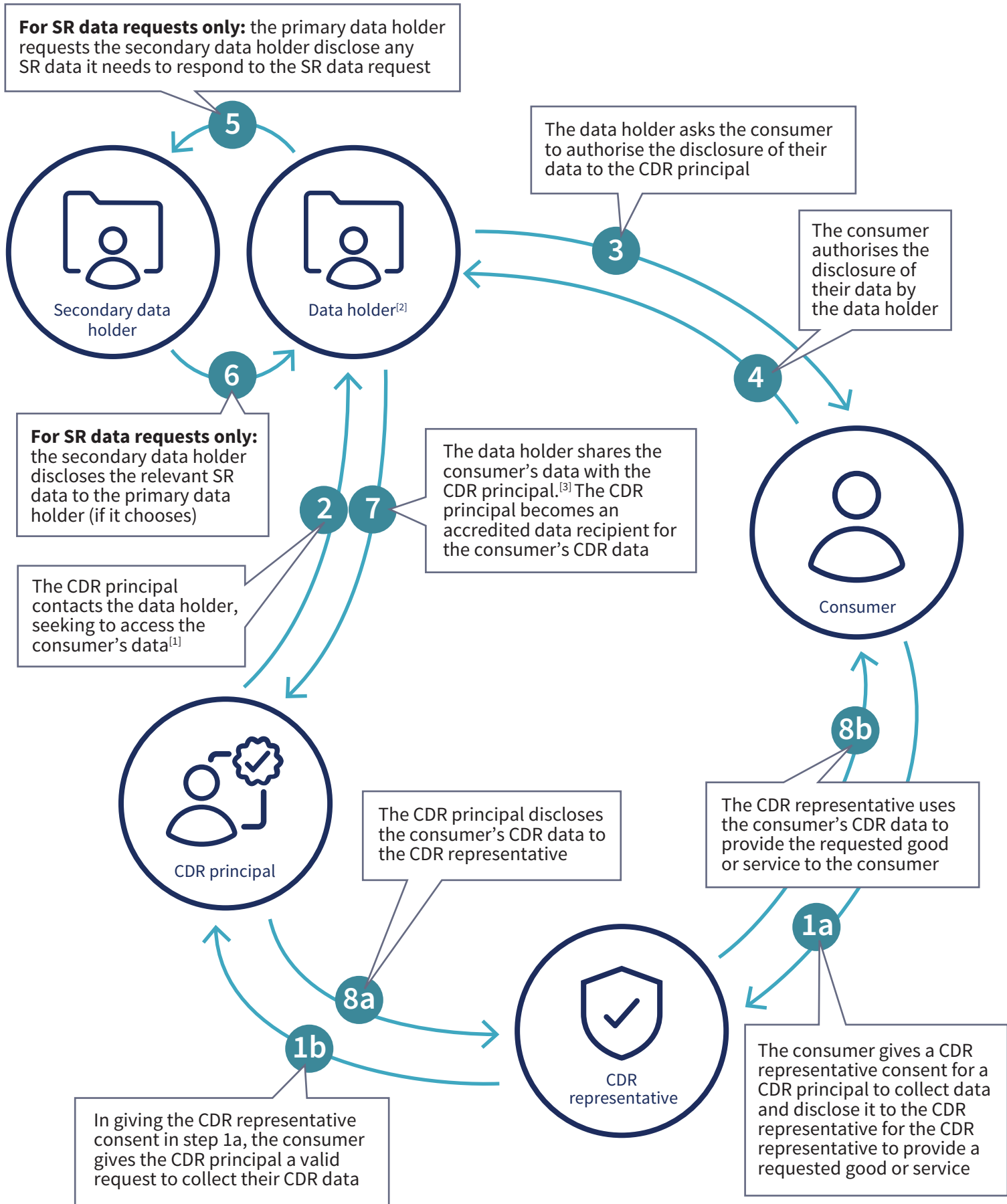


Overview: key information flow for CDR representative arrangements



[1] If the CDR principal is seeking CDR data that is or includes SR (shared responsibility) data, it contacts the primary data holder (rather than the secondary data holder)

[2] For SR data requests, this will be the primary data holder

[3] Where the data holder is a primary data holder and the secondary data holder has refused to disclose SR data to it, the primary data holder will not be able to share that SR data with the CDR principal